

Daftar Pustaka

- Berman, J., and P. E. Sudbery. 2002. *Candida albicans* : A Molecular Revolution Built On Lessons From Budding Yeast. Nature Publishing Group. 3:918–930. doi: 10.1038/nrg948.
- Bhavan, P. S., R. Rajkumar, S. Radhakrishnan, C. Seenivasan, and S. Kannan. 2010. Culture and Identification of *Candida albicans* from Vaginal Ulcer and Separation of Enolase on SDS-PAGE. International Journal of Biology. 2(1): 84–93. doi: 10.5539/ijb.v2n1p84.
- Byadarahally Raju, S. and Rajappa, S. 2011. Isolation and Identification of *Candida* from the Oral Cavity. ISRN Dentistry, 2011, pp. 1–7. doi: 10.5402/2011/487921.
- Crampin, H., K. Finley, M. G. Nejad, H. Court, C. Gale, J. Berman, P. Sudbery. 2005. *Candida albicans* hyphae have a Spitzenkorper that is distinct from the polarisome found in yeast and pseudohyphae. Journal of Cell Science, 118(13): 2935–2947. doi: 10.1242/jcs.02414.
- Deorukhkar, S., Saini, S. and Jadhav, P. 2012. Evaluation of different media for germ tube production of *Candida albicans* and *Candida dubliniensis*. International Journal of Biomedical and Advance Research. 199: 704–707. Available at: <http://www.ssjournals.com/index.php/ijbar/article/view/213>.
- Desai, J. 2018. *Candida albicans* Hyphae: From Growth Initiation to Invasion. Journal of Fungi, 4(1), p. 10. doi: 10.3390/jof4010010.
- Dos Santos, V. B. et al. 2011. Evaluation of turbidimetric and nephelometric techniques for analytical determination of N-acetylcysteine and thiamine in pharmaceutical formulations employing a lab-made portable microcontrolled turbidimeter and nephelometer. *Journal of the Brazilian Chemical Society*, 22(10), pp. 1968–1978. doi: 10.1590/S0103-50532011001000019.
- El-kersh, T. A. et al. 2014. Effect of Incubation Temperature and Human Serum on Yeast to Hyphal Morphogenesis in Vaginal *Candida albicans* and its Correlation to Virulence Markers. British Microbiology Research Journal pp. 798–812.
- Eriyanto. 2011. Analisis Isi : Pengantar Metodologi Untuk Penelitian Ilmu Komunikasi dan Ilmu-Ilmu Sosial Lainnya. 1st edn. Jakarta: PT Fajar Interpretama Mandiri.
- Ferreira, C., V. Thiemy, M. Aparecida, D. Nicole, A. Seth. 2004. Reverse Transcription and Polymerase Chain Reaction : Principles and Application In Dentistry. Journal of applied oral science : revista FOB, 12(1): 1–11. doi: 10.1590/S1678-77572004000100002.
- Fiala, J. et al. 1999. Evaluation of cell numbers and viability of *Saccharomyces cerevisiae* by different counting methods. *Kluwer Academic Publishers*, pp. 787–795. doi: 10.1023/A:1008974419342.

- Ghosh, S., D. H. M. L. P. Navarathna, D. D. Roberts, J. T. Cooper, A. L. Atkin, T. M. Petro, and K. W. Nickerson. 2009. Arginine-Induced Germ Tube Formation in *Candida albicans* Is Essential for Escape from Murine Macrophage, 77(4):. 1596–1605. doi: 10.1128/IAI.01452-08.
- Ghugtyal, V. R. G. Rodas, A. Seminara, S. Schaub, M. Bassilana, R. A. Arkowitz. 2015. Phosphatidylinositol-4-phosphate-dependent membrane traffic is critical for fungal filamentous growth. Proceedings of the National Academy of Sciences, 112(28): 8644–8649. doi: 10.1073/pnas.1504259112.
- Hanafiah, K. A. 2016. Rancangan Percobaan. 3rd edn. PT RajaGrafindo Persada.
- Haw, B., B. Venugopal, O. Eugene, I. Asma, and S. Sasidharan. 2012. Isolation and identification of *Candida albicans* to produce in house helicase for PCR. Proceedings of The 2nd Annual International Conference Syiah Kuala University, 2(1), :1–6.
- Hospenthal, D. R. 2008. Diagnosis and Treatment of Human Mycoses. Totowa, New Jersey: Humana Press.
- Hudson, D. A., Q. L. Sciascia, R. J. Sanders, G.E. Norris, P. J. B. Edwards, P. A. Sullivan and P. C. Farley. 2004. Identification of the dialysable serum inducer of germ-tube formation in *Candida albicans*. Microbiology, 150(9): 3041–3049. doi: 10.1099/mic.0.27121-0.
- Imran, Z. K. and H. N. Al-Shukry. 2014. Molecular diagnosis of vaginal candidiasis by polymerase chain reaction (PCR) and random amplification polymorphism DNA (RAPD-PCR) in Babylon Province, Iraq. African Journal of Microbiology Research, 8(6):496–502. doi: 10.5897/AJMR2013.5945.
- Ingle, S., S. Kodgire , A. Shiradhane , R. Patil and G. Zore. 2017. Chlamydospore Specific Proteins of *Candida albicans*. Data. 2(3): 26. doi: 10.3390/data2030026.
- Isibor, Eghubare and Omoregie. 2015. Germ Tube Formation in *Candida albicans*:Evaluation of Human and Animal Sera and Incubation Atmosphere, Shiraz *E-Medical Journal*, 6(1). Available at: <http://webcache.googleusercontent.com/search?q=cache:http://emedicalj.portal.tools/46103.pdf>.
- Jasim S. T., M. T. Flayyih and A. A. Hassan. 2016. Isolation And Identification Of *Candida* Spp. From Different Clinical Specimens And Study The Virulence Factors. Journal Of Pharmacy And Pharmaceutical Sciences. 5(1):121–137.
- Jawetz, Melnick, & A. 2013. Medical Microbiology, Jawetz, Melnick, & Adelberg's Medical Microbiology. doi: 10.1017/CBO9781107415324.004.
- Kabir, M. A., M. A. Hussain, and Z. Ahmad. 2012. *Candida albicans* : A Model Organism for Studying Fungal Pathogens. ISRN Microbiology. 2012: 1–15. doi: 10.5402/2012/538694.

- Kim, J. and Berry. 2011. *Candida albicans* a Major Human Fungal Patogen. *Journal of Microbiology*. 49(2):171–177. Available at: <https://4fnf192psu9e3d280z3z4m8q-wpengine.netdna-ssl.com/wp-content/uploads/research/candida-albicans-a-major-fungal-pathogen.pdf>.
- Klengel, T., W. J. Liang, J. Chaloupka, C. Ruoff1, K. Schroppel, J. R. Naglik, S. E. Eckert, E. G. Mogensen, K. Haynes, M. F. Tuite1, L. R. Levin, J. Buck, and F. A. Muhlschlegel. 2014. Fungal Adenylyl Cyclase Integrates CO₂ Sensing with cAMP Signaling and Virulence. *Curr Biol*. 60(1): 186–196. doi: 10.1373/clinchem.2013.215251.
- Madhad V. J., K. P. Sentheil. 2014. The Rapid & Non-Enzymatic isolation of DNA from the Human peripheral whole blood suitable for Genotyping, *European Journal of Biotechnology and Bioscience*, 1(3):1–16.
- Marinho, S. A., A. B. Teixeira, O. S. Santos, R. F. Cazanova, C. A. S. Ferreira, K. Cherubini, S. Dias. 2003. Identification Of *Candida* Spp. By Phenotypic Tests And PCR'. *Brazilian Journal of Microbiology*. 41:286–294.
- Matare, T., P. Nziramasanga, L. Gwanzura, and V. Robertson. 2017. Experimental Germ Tube Induction in *Candida albicans*: An Evaluation of the Effect of Sodium Bicarbonate on Morphogenesis and Comparison with Pooled Human Serum. *BioMed Research International*. 2017: 8–13.
- Mohammadi F. , Javaheri MR, Nekoeian S, D. P. 2016 Identification of *Candida* species in the oral cavity of diabetic patients. *Curr Med Mycol*, 2(2): 1–7. doi: 10.18869/acadpub.cmm.2.2.4.
- Mosaid A. A., D. J. Sullivan, and D. C. Coleman. 2003. Differentiation of *Candida dubliniensis* from *Candida albicans* on Pal's Agar. *Journal Of Clinical Microbiology*. 41(10): 323–327. doi: 10.1128/JCM.41.10.4787.
- Nadeem, S. G., A. Shafiq, S. T. Hakim, Y. Anjum, S. U. Kazm. 2013. Effect of Growth Media, pH and Temperature on Yeast to Hyphal Transition in *Candida albicans*. *Open Journal of Medical Microbiology*. 3(3): 185–192. doi: 10.4236/ojmm.2013.33028.
- Nasution, A. 2013. Virulence Factor and Pathogenicity of *Candida albicans* in Oral Candidiasis, *World dentistry*. 4(4), pp. 267–271.
- Notoatmodjo, S. 2012. *Metode Penelitian Kesehatan*. 2nd edn. PT RINEKA CIPTA.
- Pfaller M. A. G., J. Moet, S. A. Messer, R. N. Jones, and M. Castanheira. 2011. *Candida* Bloodstream Infections : Comparison of Species Distributions and Antifungal Resistance Patterns in Community-Onset and Nosocomial Isolates in the SENTRY Antimicrobial Surveillance Program , 2008-2009. 55(2):561–566. doi: 10.1128/AAC.01079-10.
- Pfaller, M. A., and D. J. Diekema. 2007. Epidemiology of invasive candidiasis: A persistent public health problem', *Clinical Microbiology Reviews*, 20(1), pp. 133–163. doi: 10.1128/CMR.00029-06.

- Raju B. S., and S. Rajappa. 2011. Isolation and Identification of *Candida* from the Oral Cavity, *ISRN Dentistry*. 2011: 1–7. doi: 10.5402/2011/487921.
- Raw, L. *et al.* 2009. Arginine-Induced Germ Tube Formation in *Candida albicans* Is Essential for Escape from Murine Macrophage. *77*(4), pp. 1596–1605. doi: 10.1128/IAI.01452-08.
- Rida P.C.G., A. Nishikawa, G. Y. Won, and N. Dean. 2010. Yeast-to-Hyphal Transition Triggers Formin-dependent Golgi Localization to the Growing Tip in *Candida albicans*. *International Journal of Biological Sciences*. *6*(6): 569–583. doi: 10.1091/mbc.E06.
- Rooshereo, indrawati G. and Sjamsuridzal, W. 2006. Mikologi Dasar dan Terapan.
- Spl;amiaji, T. 2011. Gas CO₂ di Wilayah Indonesia. *Berita Dirgantara*. Vol 12 (2).
- Sancak B., J. H. Rex, V. Paetznick, E. Chen, and J. Rodriguez. 2003. Evaluation of a method for identification of *Candida dubliniensis* bloodstream isolates, *Journal of clinical Microbiology*, *41*(1): 489–491. doi: 10.1128/JCM.41.1.489.
- Sugiyono. 2014. Metode Penelitian Kuantitatif, Kualitatif, Dan R & D, in. Bandung: Alfabeta, pp. 39–41.
- Veses, V. and N. A. R. Gow. 2009. Pseudohypha budding patterns of *Candida albicans*'. *Medical Mycology*, *47*(3): 268–275. doi: 10.1080/13693780802245474.
- Yapar, N. 2014. Epidemiology and risk factors for invasive candidiasis', Therapeutics and Clinical Risk Management. *Dovepress open access to scientific and medical research*10(1): 95–105. doi: 10.2147/TCRM.S40160.
- Zaidan, K. I. and Hadeel, N. A.-S. 2014. Molecular diagnosis of vaginal candidiasis by polymerase chain reaction (PCR) and random amplification polymorphism DNA (RAPD-PCR) in Babylon Province, Iraq. *African Journal of Microbiology Research*, *8*(6), pp. 496–502. doi: 10.5897/AJMR2013.5945.
- Zamora, L. L. 2012. Using digital photography to implement the McFarland method Using digital photography to implement the McFarland method. *J. R. Soc. Interface* no 9. pp. 1892–1897.

Lampiran 1. Data Hasil Pengukuran Jumlah Germ Tube pada Berbagai Konsentrasi Karbondioksida



KEMENTERIAN KESEHATAN RI
BADAN PENGEMBANGAN DAN PEMBERDAYAAN
SUMBER DAYA MANUSIA KESEHATAN
POLITEKNIK KESEHATAN DENPASAR
JURUSAN ANALIS KESEHATAN




Alamat: Jl. Sanitasi No. 1 Sidakarya, Denpasar. Telp: (0361) 710527, Fax: (0361)710448
 Website : www.poltekkes-denpasar.ac.id/analiskesehatan
 Email: analiskesehatandenpasar@yahoo.co.id


LABORATORIUM BAKTERIOLOGI JURUSAN ANALIS KESEHATAN
DATA HASIL PENELITIAN KARYA TULIS ILMIAH

Perihal : Uji Induksi Germtube Dengan Berbagai Konsentrasi Karbondioksida
Nama Peneliti : I Gusti Ngurah Dwija Putra
Judul Penelitian : Pengaruh Konsentrasi Karbondioksida Terhadap Pembentukan Germ Tube *Candida Albicans*

Tabel 1. Jumlah germ tube yang terbentuk dengan berbagai pengaruh konsentrasi karbondioksida

Perlakuan	Jumlah germtube (sel/mm ³)					Rata-rata
	I	II	III	IV	V	
Kontrol	770	980	875	700	820	829
5 %	1260	1550	1055	1225	865	1191
10%	1195	1310	1185	1130	1040	1172
15%	1315	1470	1200	1195	1235	1283
20%	995	1210	1060	1115	1115	1099

Mengetahui
 Kepala Jurusan Analis Kesehatan
 Ka. S. Unit Laboratorium

 Wayan Merta, S.KM., M.Si.
 NIP. 195412311976081001

Denpasar,
 Penanggungjawab Laboratorium Bakteriologi

 Burhannuddin, S.Si., M.Biomed
 NIP. 198602282009121003

Lampiran 2. Hasil Uji Statistika

A. Uji Normalitas Data Dengan Uji *Shapiro-Wilk*

Tests of Normality							
	pengaruh	Kolmogorov-Smirnov ^a			Shapiro-Wilk		
		Statistic	df	Sig.	Statistic	df	Sig.
germtube	kontrol	.134	5	.200 [*]	.991	5	.983
	5 %	.193	5	.200 [*]	.982	5	.943
	10 %	.208	5	.200 [*]	.978	5	.925
	15 %	.262	5	.200 [*]	.837	5	.158
	20 %	.220	5	.200 [*]	.969	5	.869

*. This is a lower bound of the true significance.

a. Lilliefors Significance Correction

B. Hasil Uji Beda dengan *One Way Anova*

ANOVA

germtube					
	Sum of Squares	df	Mean Square	F	Sig.
Between Groups	5965.040	4	1491.260	7.072	.001
Within Groups	4217.200	20	210.860		
Total	10182.240	24			

C. Hasil Uji LSD (*Least Significant Difference*)

Multiple Comparisons

Dependent Variable: germtube

LSD

(I) pengaruh	(J) pengaruh	Mean Difference (I-J)	Std. Error	Sig.	95% Confidence Interval	
					Lower Bound	Upper Bound
kontrol	5 %	-36.20000*	9.18390	.001	-55.3573	-17.0427
	10 %	-34.30000*	9.18390	.001	-53.4573	-15.1427
	15 %	-45.40000*	9.18390	.000	-64.5573	-26.2427
	20 %	-27.00000*	9.18390	.008	-46.1573	-7.8427
5 %	kontrol	36.20000*	9.18390	.001	17.0427	55.3573
	10 %	1.90000	9.18390	.838	-17.2573	21.0573
	15 %	-9.20000	9.18390	.328	-28.3573	9.9573
	20 %	9.20000	9.18390	.328	-9.9573	28.3573
10 %	kontrol	34.30000*	9.18390	.001	15.1427	53.4573
	5 %	-1.90000	9.18390	.838	-21.0573	17.2573
	15 %	-11.10000	9.18390	.241	-30.2573	8.0573
	20 %	7.30000	9.18390	.436	-11.8573	26.4573
15 %	kontrol	45.40000*	9.18390	.000	26.2427	64.5573
	5 %	9.20000	9.18390	.328	-9.9573	28.3573
	10 %	11.10000	9.18390	.241	-8.0573	30.2573
	20 %	18.40000	9.18390	.059	-.7573	37.5573
20 %	kontrol	27.00000*	9.18390	.008	7.8427	46.1573
	5 %	-9.20000	9.18390	.328	-28.3573	9.9573
	10 %	-7.30000	9.18390	.436	-26.4573	11.8573
	15 %	-18.40000	9.18390	.059	-37.5573	.7573

*. The mean difference is significant at the 0.05 level.

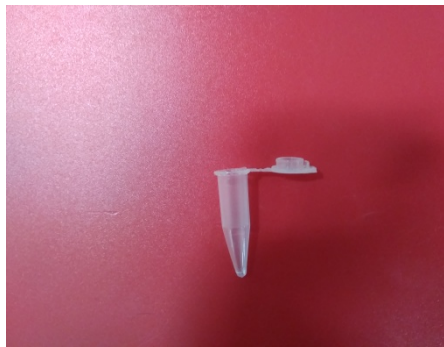
Lampiran 3 Dokumentasi alat dan bahan



Mikropipet



Mikrotip



Cup sampel



Kamar hitung (Improved neubauer)



inkubator



Inkubator CO₂



Bio savety cabinet

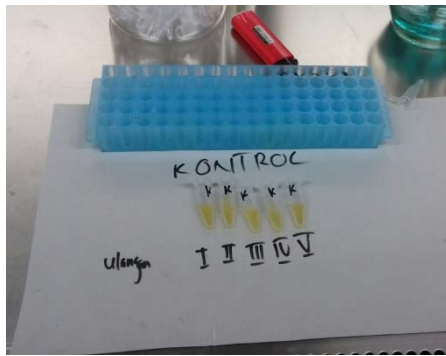


mikroskop



Mc Farland Densitometer

Lampiran 4. Dokumentasi proses pengerjaan



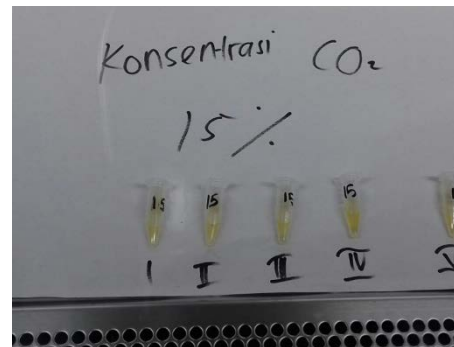
Perlakuan kontrol



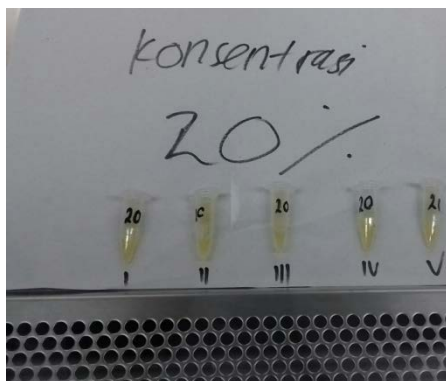
Perlakuan konsentrasi CO₂ 5%



Perlakuan konsentrasi CO₂ 10%



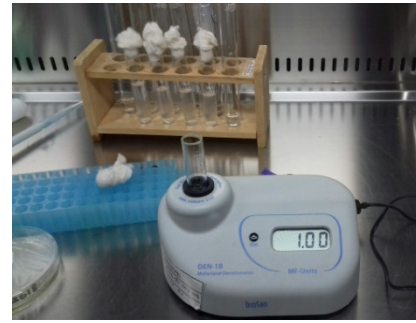
Perlakuan konsentrasi CO₂ 15%



Perlakuan konsentrasi CO₂ 20%



Proses penanaman *Candida albicans*



Pembuatan suspensi jamur



Proses penghitungan germ tube pada kamar hitung